



**Lighter  
Stronger  
Better!**

A: 29 Snook St Clontarf QLD 4019  
A: PO Box 122 Margate QLD 4019  
P: 07 3897 5700  
F: 07 3811 6480  
E: info@ecb.com.au  
W: ecb.com.au  
W: customalloy.com.au



REPLACES: 05.04.17  
REVISED: 04.03.21

## BT33SY

### FITTING INSTRUCTIONS

#### TOYOTA KLUGER 02/17on BIG TUBE BAR (WITH BUMPER LIGHTS) VEHICLE FRONTAL PROTECTION SYSTEM (VFPS) FOR AIR BAG & ADR COMPLIANT VEHICLES

*Ensure these instructions are left with the vehicle owner and/or operator.*

Check installation hardware before commencing.

1. Lift bonnet.
2. Remove radiator cover. Nine push pull plastic clips. Push centre of clip to remove and pull to outside to install.
3. From behind grille, disconnect camera, parking sensors and radar unit (if fitted). Remove six push pull plastic clips from top and centre mounts. Grille will be removed in one piece with bumper.
4. Behind grille, remove three push pull clips from top of bumper.
5. Under front of vehicle, from front ends of inner guards, remove two 10mm head screws (per side).
6. From underside of front edge of plastic bumper remove ten 10mm head screws
7. On centre underbelly guard, remove seven 10mm head bolts and one push pull plastic clip. Remove centre under bodyguard.
8. From rear of flare, remove two 10mm head bolts, two plastic push pull clips (one between bolts and one from guard side of bumper join). Behind centre of bumper end on inner guard, using a medium screwdriver, turn centre of plastic clip ½ turn and remove centre from clip. **See figure 1.**
9. Pull inner guards rearward away from front of bumper and wheel arch too allow access to rear of flare. Disconnect fog lights and unclip wiring from rear of light assembly.
10. Unclip flare too second clip past guard / bumper join. Lower clips are accessed from rear of bumper **see figure 2**, whilst top two clips are push only style clips.
11. Gently unclip bumper from retaining clips where bolts are removed from inner guard and pull guard sides outward to release from guard, **see figure 3**. Carefully remove bumper from vehicle.
12. Remove polystyrene infill from bumper support.
13. From top of alloy bumper support, remove wiring and allow too hang. This will be refitted later.
14. Remove alloy bumper support, six 14mm head bolts, accessible from holes in front. **See figure 4.**
15. From lower radiator support, remove two 14mm head bolts and one 14mm head screw from engine cradle bracket. **See figure 5.** Push support bracket down and around to allow ECB mounting brackets too slide between engine cradle bracket and radiator support. ECB steel mounting brackets only require holes for bolts and does not

fit over welded stud. **NOTE:** Bracket is rubber mounted at rear but is very tight. Engine cradle can be loosened if required but is not recommended.

16. Install ECB steel mounting brackets to rear of bumper support, **see figure 6 and 7**. Align steel mounting brackets using measurement from Alloy protection bar mounts as a guide. Outside measurement of alloy protection bar should match inside measure of steel mounting brackets. Using ECB steel mounting brackets as a guide, drill two holes in bumper support to 10mm. **Blow filings clear and treat all exposed metal with a rust inhibitor.**
17. Fit ECB steel mounting brackets to rear of bumper support using two 3/8 x 1 1/4 bolts on wire, flat washers, spring washers and nuts (supplied). Install loosely at this stage.
18. Refit alloy bumper support and ECB steel mounting brackets to vehicle using original equipment bolts. Slide lower mount between radiator support and engine cradle bracket. Refit original equipment bolts and nuts into engine cradle bracket. Align mounts to suit previously taken measurement. **TIGHTEN ALL BOLTS.**
19. Using measurement between steel mounting brackets, mark cut out in rear of bumper lower grille. Recheck measurements before cutting. **NOTE:** Alloy bar fits to inside of steel mounts. Cut two top grille slats to accommodate mounts and to allow access to tow hooks. **See figures 8 and 9.**
20. Disconnect indicator and parking lights on vehicle. Install ECB quick click wiring harnesses (supplied) between disconnected harness and indicator / park lights on vehicle. Run wiring out from under lights ensuring clearance from sharp edges and moving parts.
21. Connect ECB Quick Click bumper light wiring harness (supplied) into original wiring harness.
22. Remove original equipment fog light and plastic mount from rear of plastic bumper. This will allow wiring access for ECB lights. **NOTE:** to keep wiring as high as possible, feed wiring through air vent above light.
23. Remove camera from rear of bumper, Two PK screws. Remove parking sensors. Using a sharp knife, remove parking sensor holders from bumper skin.
24. Refit bumper as per reverse of steps 1 to 10. Do not fit centre under bodyguard at this time. To keep wiring as high as possible, feed wiring through air vent above light. Connect radar unit and camera. Test camera for correct operation.
25. Fit ECB LED indicator / park lights into protection bar as per instructions supplied with the LED indicator kit. **NOTE: Ensure park light is to outside. See figure 10.**
26. Attach ECB bumper lights to protection bar. Place M6 x 20 bolts, spring washers (supplied) through light mount from inside and attach nut to top. Slide assembly into light mount in Protection bar and centralize light to hole.) **TIGHTEN FIRM ONLY.** Fit ECB bumper light trims (supplied) to protection bar. **See figure 11.**
27. Attach camera to rear centre of ECB protection bar using two PK self-drilling screws. Ensure camera is centre to hole and straight. Clean parking sensor mounts and rear of protection bar.. Place parking sensors into mounts. Using Loctite adhesive (supplied), attach parking sensor mounts to rear of Protection bar. **See Figure 12.**
28. Attach 6mm clip lock trim (supplied) to top of ECB protection bar. **NOTE:** Trim off lower edge on an angle so trim will sit flush with end of protection bar. **See figures 13, 14 and 15.**
29. Attach 6mm clip lock trim (supplied) to cut outs for tow hooks in ECB protection bar.

30. Install ECB protection bar to inside of ECB steel mounting brackets using three M10 x 40 bolts, flat washers, spring washers and nuts (per side) (supplied). **NOTE:** rear bolts are accessible from under vehicle. Align ECB protection bar to vehicle, **see figure 16 and 17 and tighten all bolts.**
31. Connect and test ECB indicator/ park lights, bumper lights, parking sensors and camera.
32. Refit under bodyguard.

**ENSURE NUMBER PLATE IS CLEARLY VISABLE**

**Note:** When fitting/refitting the licence plate to the vehicle, ensure there is no obstruction to licence plate vision in accordance with local authorities. If required relocate licence plate to an alternate location.

**Further VFPS Notes:**

- a) Do not attach VFPS to the vehicle using anchorages not intended for this purpose (e.g. engine mounting bolts).
- b) Do not use this product for any vehicle make or model, other than those specified by the VFPS manufacturer.
- c) Do not remove the plaque or label from the VFPS.
- d) Do not modify the structure of the VFPS in any way.
- e) No accessory or fitment should project forward of the VFPS forward profile.
- f) **ENSURE THESE INSTRUCTIONS ARE LEFT WITH VEHICLE OWNER AND/OR OPERATOR.**

**IMPORTANT INFORMATION**

Periodically check bolts and nuts for correct tightness, especially if travelling on rough roads

**FITTING KIT**

1 – Pair ECB steel mounting brackets	2 – 8g x 12 self-drilling screws
4 – 3/8 x 1 ¼ bolt and washer on 300 mm wire	1 – ECB LED indicator / DRL / park light kit (ICLED105ECB)
4 – 3/8 nuts	1 – Quick Click harness (IC17TOKLINDH)
6 – M10 x 1.5 x 40 bolts	1 – ECB bumper light kit
16 – M10 flat washers	1 – Quick click harness (IC10D40S1004ECBH)
10 – M10 spring washers	2 – Bumper light surrounds
6 – M10 x 1.5 nuts	1 – 2300mm length 6mm clip lock trim
2 – M6 x 20 bolts	2 – 300mm length 6mm clip lock trim
2 – M6 spring washers	2 – 3g tubes of Loctite gel adhesive
2 – M6 nuts	2 – 19mm button plugs



**Figure 1:** Placement of hidden plastic clip. Turn centre ½ turn and remove.



**Figure 2:** Lower flare clip



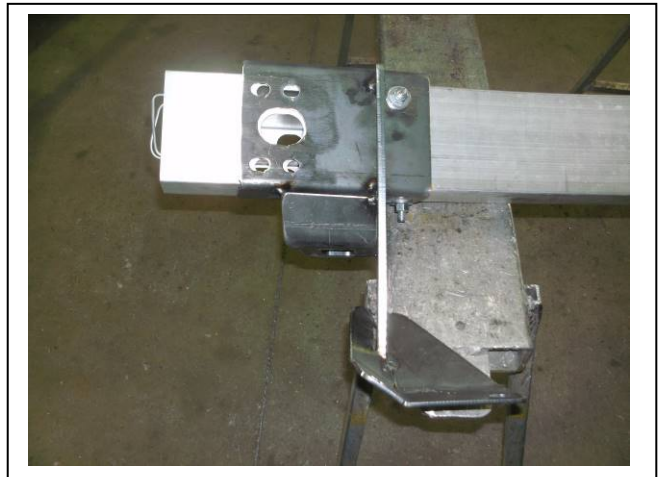
**Figure 3**



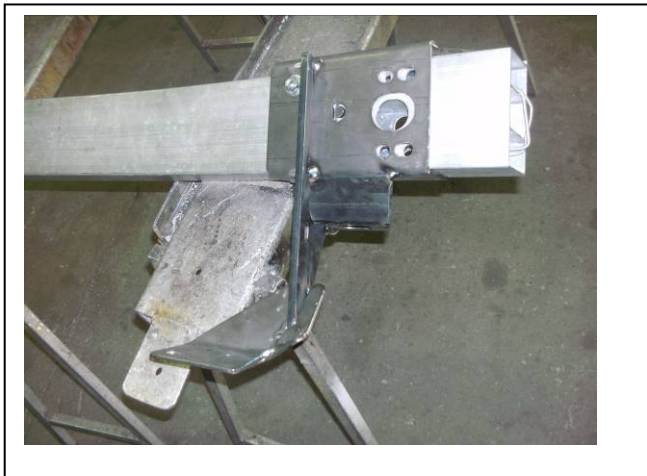
**Figure 4: Alloy bumper support**



**Figure 5: Passengers side top trim**



**Figure 6: Passengers side**



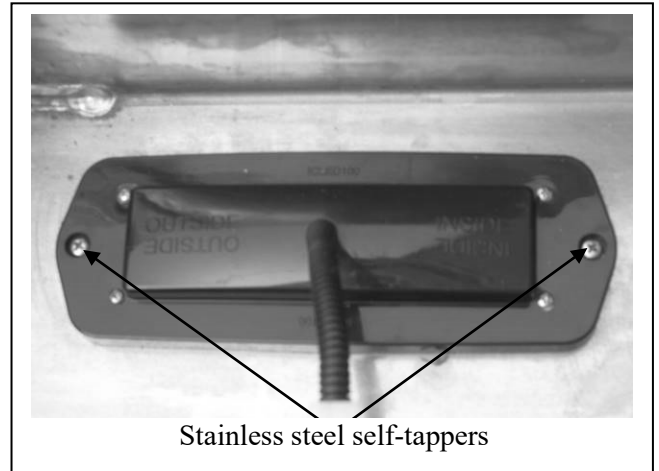
**Figure 7: Drivers side**



**Figure 8**

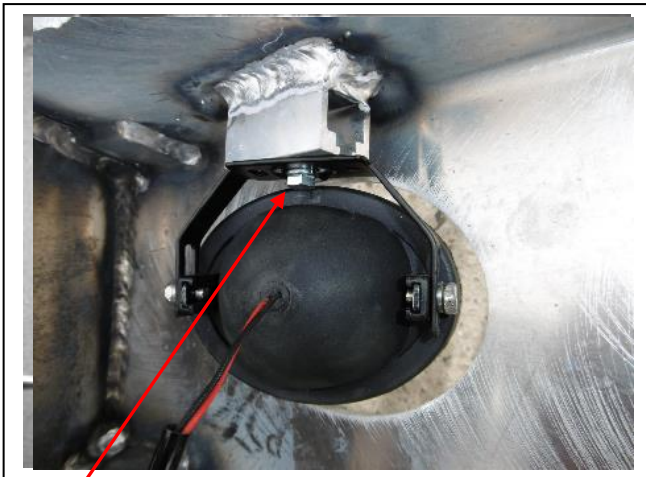


**Figure 9**



Stainless steel self-tappers

**Figure 10**

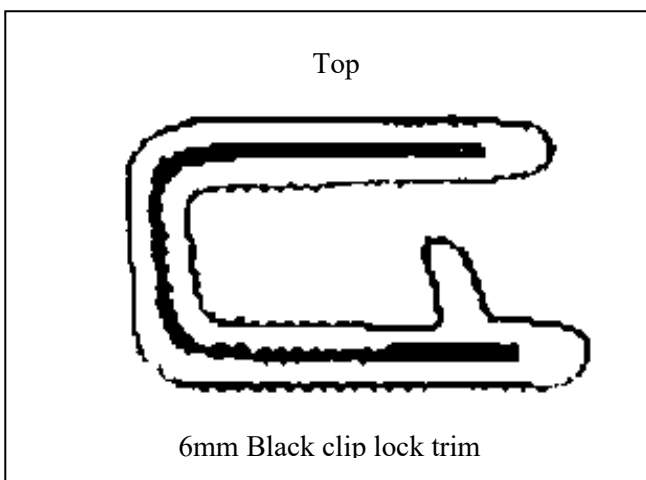


M6 Nut

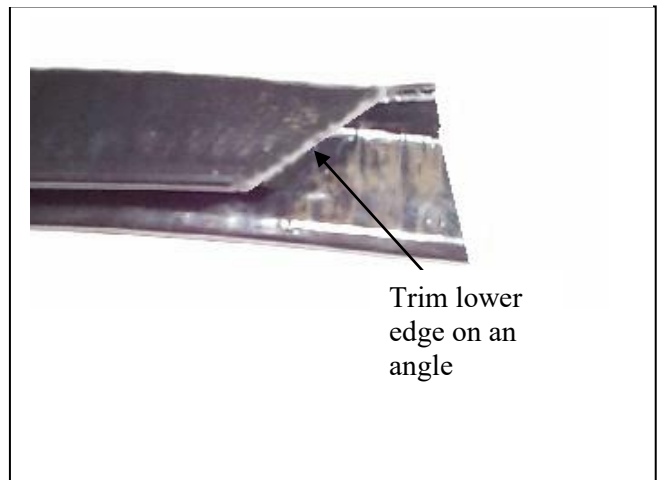
**Figure 11**



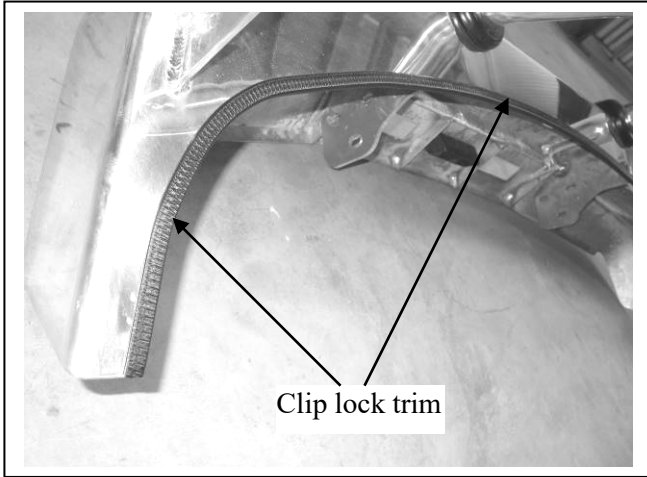
**Figure 12**



**Figure 13**



**Figure 14**



**Figure 15**



**Figure 16: Big Tube Bar front**



**Figure 17: Big Tube Bar side**



**Lighter  
Stronger  
Better!**

A: 29 Snook St Clontarf QLD 4019  
 A: PO Box 122 Margate QLD 4019  
 P: 07 3897 5700  
 F: 07 3811 6480  
 E: info@ecb.com.au  
 W: ecb.com.au  
 W: customalloy.com.au



**We value your comments**

Dear Fitter,

ECB would like to know how you went with the installation of this product. We value your comment and may need to contact you to clarify some details so please complete your contact details clearly.

We would appreciate if you could complete as many of the following details as possible.

<b>Your Name:</b>	<b>Your contact No.</b>
<b>Product Part No.</b>	<b>Product Invoice No.</b>
<b>Product Description:</b>	<b>Make, model, and year of vehicle:</b>
<b>Product Work Order No.</b>	<b>Company you are from/Company product purchased from:</b>

**Date of Fitment:** \_\_\_\_ / \_\_\_\_ / \_\_\_\_

Was the fitting hardware supplied complete?      Yes      No  
     

If no what was not supplied

---



---

Did the installation go well?      Yes      No  
     

Please provide comments

---



---



---

Please draw diagrams if you need to.

**Post to**  
 Reply Paid 122  
 PO Box 122  
 Margate QLD 4019

**Fax to**  
 (07) 3283 1168



**Lighter  
Stronger  
Better!**

A: 29 Snook St Clontarf QLD 4019  
A: PO Box 122 Margate QLD 4019  
P: 07 3897 5700  
F: 07 3811 6480  
E: [info@ecb.com.au](mailto:info@ecb.com.au)  
W: [ecb.com.au](http://ecb.com.au)  
W: [customalloy.com.au](http://customalloy.com.au)





## *Thank you for purchasing an ECB Product*

Please ensure that you read the below and complete the warranty registration.

### **Vehicle Owner / Operator Responsibilities and Product Care**

#### **Important Information**

It is the responsibility of the vehicle owner and operator to ensure all nuts and bolts are checked periodically, especially when travelling on corrugated roads. Please ensure these are tightened as per the steps in the provided fitting instructions.

While ECB products are manufactured from high tensile alloy the vehicle owner / operator must check any steel mounting brackets or steel auxiliary parts for signs of corrosion. If you find any corrosion, please contact ECB Pty Ltd to discuss an appropriate solution – 1800 069 145 or [www.ecb.com.au](http://www.ecb.com.au).

### **Product Care**

#### **Polished Products**

Being a premium mirror polished finish, regular maintenance will be required to keep that iconic ECB shine. We recommend using our own brand of Aluminium Polish. This formula has been tried and tested and in our opinion is the world's best standard.

Directions: Apply a small quantity of Aluminium Polish to a clean soft cloth and rub the metal surface. The longer the rubbing the brighter the surface becomes. Wipe off Aluminium Polish with clean soft cloth. Also suitable for motorised buffing machines. Note: There are more specific details on the polish bottle. Please read before use.

#### **Powder Coated Products**

Our powder coated finishes are very low maintenance. In fact, there is actually very little you will ever need to do for this product. Just clean it as you would your car and it will stay looking good as new.

#### **ECB Aluminium Polish**

When you're looking for that showroom finish look for your polished automotive products, you can depend on the no compromise quality of East Coast Bullbars Aluminium Polish. This specifically designed product is the best polish available and we guarantee that this \$#!+ works. Within our decades of manufacturing polished alloy products, we have trialled a large range of different polishes on the market and believe without a doubt that nothing beats the finish quality of East Coast Bullbars Aluminium Polish.

East Coast Bullbars Aluminium Polish is excellent for use by hand and is ideal for polished bullbars, nudge bar and stainless-steel products. This polish will clean, polish and protect your product from the elements whilst bringing your products back to that showroom finish look.





**Lighter  
Stronger  
Better!**

A: 29 Snook St Clontarf QLD 4019  
 A: PO Box 122 Margate QLD 4019  
 P: 07 3897 5700  
 F: 07 3811 6480  
 E: info@ecb.com.au  
 W: ecb.com.au  
 W: customalloy.com.au



## Warranty Registration

Please Register your purchase online [www.ecb.com.au/warranty-registration](http://www.ecb.com.au/warranty-registration)  
 If you have any questions, please contact our national office on 1800 069 145 or [www.ecb.com.au](http://www.ecb.com.au)

Or post the below information back to ECB, PO Box 122, Margate, QLD 4019.

### Contact Details

Name:	
Address:	
Email:	
Phone:	

### Purchase Details

Purchased from:	
Date of Purchase:	

### Product Details

(You can find this information on the silver label of your ECB Product)

Part Number:	BT33SY
Work Order Number:	

By submitting this registration, you automatically subscribe to ECB's mail outs. You can unsubscribe at any time.

## DESPATCH CHECKLIST BT33SY

Work Order #		<b>See other side of this page for photos of all mounts</b>
Finish:		
Transport:		
Due Date:		

- OC.....1 – Pair Steel mounting brackets.
- OC.....2 – ECB Overrides – **Fitted to Bar**
- OC.....6 – 6mm Air Vents – **Fitted to Bar**
- BK.....1 – Bolt Kit.
- BK.....1 – ECB LED Indicator / DRL / Park light kit (ICLED105ECB)
- BK.....1 – Quick click harness (IC17TOKLINDH)
- BK.....1 – ECB Bumper light kit
- BK.....1 – Quick click harness (IC10D40S1004ECBH)
- BK.....2 – Bumper light surrounds
- BK.....1 – 2300mm length 6mm clip lock
- BK.....2 – 300mm length 6mm clip lock

\_\_\_\_\_/\_\_\_\_\_  
Wrapper's initials / Checker initials



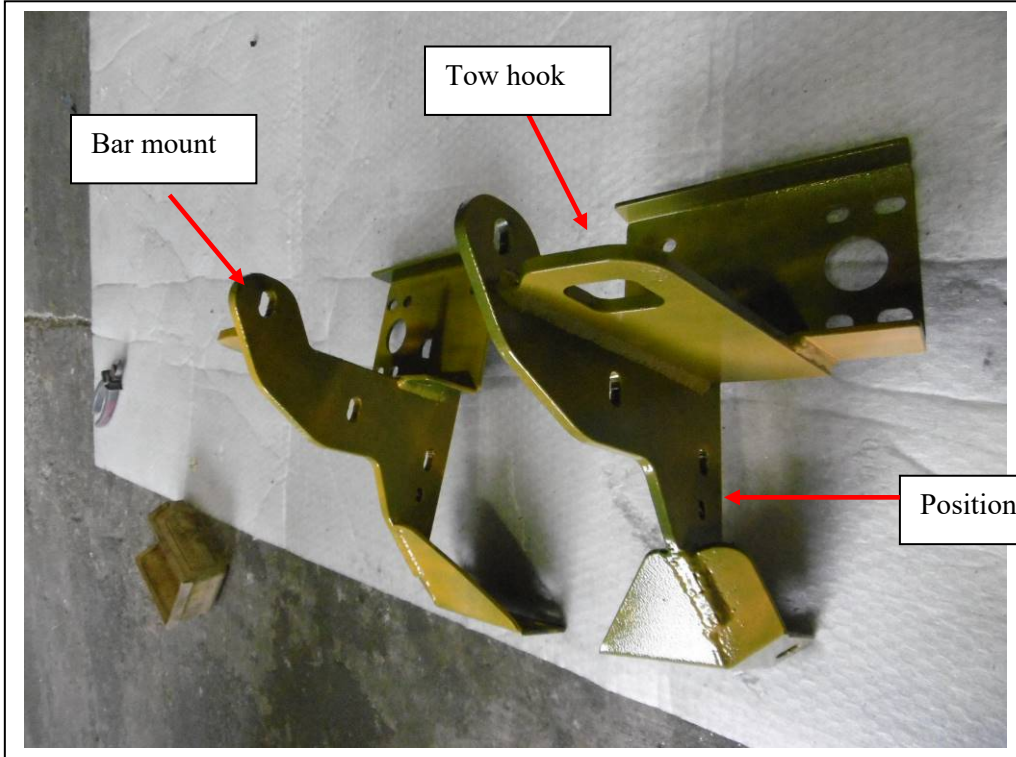
**Is this product “the best it can be” Yes**  
If **NO** fix before continuing

All parts checked and completed by:

Nut and bolts: \_\_\_\_\_ Date    /    /   

Order control: \_\_\_\_\_ Date    /    /   

Final wrap check: \_\_\_\_\_ Date    /    /



NOTE: Has 3 in rear of mount. Tow hook is straight and bar mount is longer than previous model.

\_\_\_\_\_  
Wrapper's initials / \_\_\_\_\_  
Checker initials